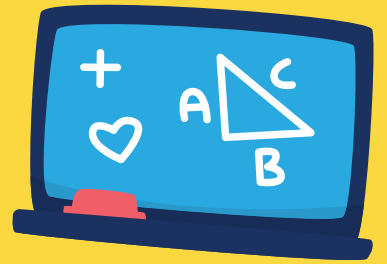




**REGENT  
INTERNATIONAL  
SCHOOL**

# **CAMBRIDGE EARLY YEARS FOUNDATION STAGE**



# **UNLEASH THE MAGIC OF LEARNING**

**HALF-DAY: 8AM - 1:30PM  
FULL-DAY: 8AM - 6PM**

# CAMBRIDGE EARLY YEARS FOUNDATION STAGE

We understand the critical role the early years play in a child's development. Our Cambridge EYFS programme is dedicated to providing a foundation that fosters your child's intellectual, social, emotional, and physical growth.

## OUR APPROACH:



### PLAY-BASED LEARNING

Classrooms are designed to encourage exploration, discovery, and creativity through engaging play activities, including free play, pretend play, sensory play, and outdoor play.

### HOLISTIC DEVELOPMENT

We go beyond academics to support your child's overall development, focusing on nurturing social skills, emotional well-being, language skills, physical development, and creativity.



### EXPERIENCED AND QUALIFIED TEACHERS

Our passionate and dedicated teachers provide your child with the individual attention and support needed to thrive.



# KEY FEATURES OF OUR CAMBRIDGE EARLY YEARS FOUNDATION STAGE PROGRAMME



## AGE-APPROPRIATE CURRICULUM:

This programme is designed to nurture well-rounded individuals and caters to the learning and development of children aged 3 to 5.

## FOCUS ON ENGLISH LANGUAGE ACQUISITION:

We foster strong English language skills through a stimulating environment filled with interactive activities, storytelling, and songs.



## MULTILINGUAL EXPOSURE:

Students are exposed to Malay and Mandarin languages through dedicated materials and engaging activities.

## DEDICATED LEARNING AREAS:

Classrooms are designed to support specific developmental needs, providing spaces for creative arts, sensory exploration, and more.



## OUTDOOR PLAY:

Students have access to a safe and stimulating outdoor space to play, explore nature, and connect with the environment.

# EXTENDED HOURS PROGRAMME

Regent International School understands the needs of working families. We offer an optional extended hours programme for students enrolled in the Cambridge EYFS programme.

This programme extends the school day from 1:30 pm to 6:00 pm, providing a safe and stimulating environment for students to continue their learning and development in the afternoon.

## WHAT TO EXPECT IN THE EXTENDED HOURS PROGRAMME:

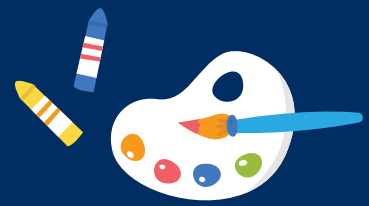
### BALANCED SCHEDULE



Free Play



Outdoor Play



Creative Activities



Storytelling & Reading

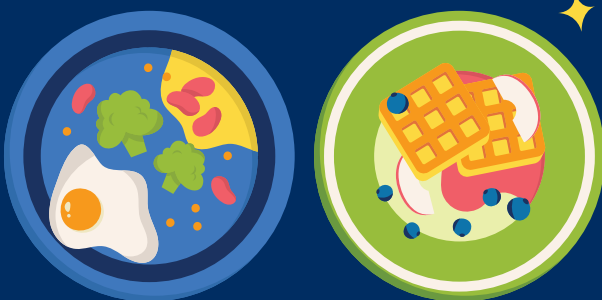


Music & Movement



Nap Time

### HEALTHY SNACKS AND MEAL



### CARE BY QUALIFIED STAFF





# UNLOCK THE MAGIC OF LEARNING TODAY

GIVE YOUR CHILD THE GIFT OF A STIMULATING AND NURTURING START AT REGENT INTERNATIONAL SCHOOL. CONTACT US TODAY TO LEARN MORE AND SCHEDULE A VISIT!



[HTTPS://REGENT.EDU.MY/](https://regent.edu.my/)



1-800-88-7775

## KLANG CAMPUS



admissions@regent.edu.my



03-64192564

## KUANTAN CAMPUS



leonglaisim@regent.edu.my



09-5201020

## SG. PETANI CAMPUS



sharifah@regent.edu.my  
pauline.chang@regent.edu.my



04-3717836